

# INDIGENOUS PARTICIPATION PLAN



## BACKGROUND INFORMATION

### Yorta Yorta Nation Aboriginal Corporation

YYNAC represents 8 different clan groups, where the Yorta Yorta language is spoken by all of the Yorta Yorta Clans, including the Kailtheban, Wollithiga, Moira, Ulupna, Bangerang, Kwat Kwat, Yalaba Yalaba and Ngurai-illiam-wurrung clans.

Yorta Yorta lands lie on both sides of the Murray River (Dhungala - Yorta Yorta language and creation spirit and name for the river), north-east Victoria and southern NSW and radiates out from the Murray and Goulburn river junction (Kiaella - Yorta Yorta language for father and name of the river). It takes in towns from Cohuna to a point west of Albury/Wodonga and includes Echuca, Shepparton/Mooroopna, Murchison, Euroa, Benalla Wangaratta, Rutherglen Corowa and extends north to near Deniliquin in NSW.

### Taungurung Clans Aboriginal Corporation

Taungurung Clans Aboriginal Corporation TCAC represents the interests of the 15 different clan groups of Taungurung; Budhera-Bulok, Leuk-Yilam, Mum-Mum-Yilam, Naterrak-Bulok, Nira-Bulok, Waring-Yilam-Bulok, Yaran-Yilam-Bulok, Yiran-Yilam-Bulok, Yawang-Yilam-Bulok, Benbendore-Balluk, Gunung-Yellam, Ngurai-Ilaam-Balluk, Tenbringnellams, Walledriggers, and Warrinillum.

The Taungurung (Daung wurrung) people occupy much of central Victoria. Taungurung Country encompasses the area between the upper reaches of the Goulburn River and its tributaries north of the Dividing Range. From the Campaspe River in the west, eastwards to the Great Dividing Range, The Ovens River in the north and south to the top of the Great Dividing Range and boundaries with adjoining Aboriginal tribes are respected in accordance with traditional laws.

### Goulburn Broken CMA

The Goulburn Broken CMA is a statutory Authority established by the Victorian Parliament in 1997 under the *Catchment and Land Protection Act 1994*. The Goulburn Broken CMA is accountable for its performance to the Minister for Water and the Minister for Energy Environment and Climate Change.

The Goulburn Broken Regional Catchment Strategy 2013-19 sets out the framework for coordinating land, water and bio-diversity management in the catchment.

The Goulburn Broken CMA covers 2.4 million hectares, extending north from near the outskirts of Melbourne to the Murray River on the border of NSW. The Catchment has a diversity of landscapes including seasonally snow covered alps, forests, granitic outcrops, gentle sloping plains, box woodlands and red gum floodplains. The Goulburn Broken Catchment has a rich and diverse community.

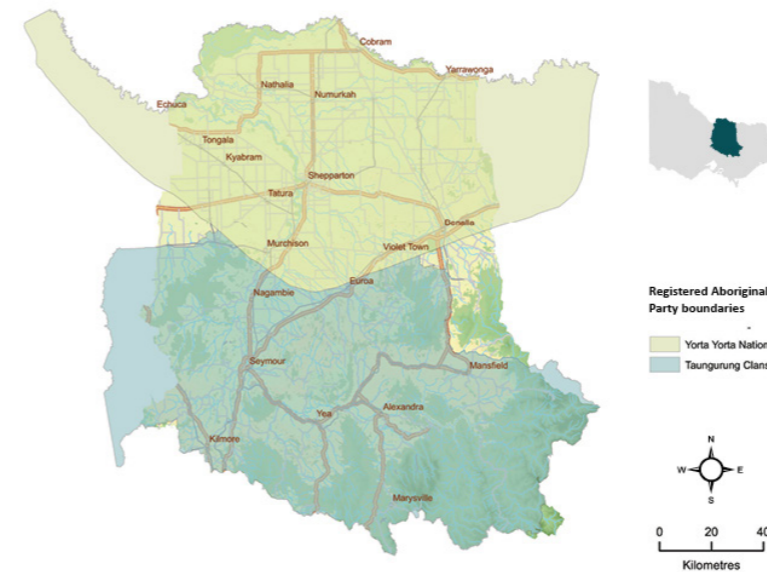
The catchment has an estimated population of 205,000 people, which includes 6,000 Indigenous Australians, many whom identify as the Traditional Owners of this area.

## REFERENCES FOR FURTHER INFORMATION

- Yorta Yorta Nation Aboriginal Corporation Whole of Country Plan (2012-2017)
- Taungurung Clans Aboriginal Corporation Whole of Country Plan (2017)
- Goulburn Broken Regional Catchment Management Strategy (2013-2019)
- Memorandum of Understanding YYNAC and Goulburn Broken CMA (2014-2017)
- Wayne Tennant Cadetship Pilot Program (Goulburn Broken CMA)
- Aboriginal Participation Guidelines for Victorian Catchment Management Authorities (Victorian—2016)
- Victorian State Biodiversity Strategy - Biodiversity 2036
- Goulburn Broken Regional Biodiversity Strategy (2016-2021)

## PURPOSE

This participation plan defines the cooperative relationship between Traditional Owners, represented by Yorta Yorta Nation Aboriginal Corporation (YYNAC) and Taungurung Clans Aboriginal Corporation (TCAC), and the Goulburn Broken Catchment Management Authority (Goulburn Broken CMA), with respect to participation activities, programs and partnerships within the Goulburn Broken Catchment.



## ACKNOWLEDGEMENT OF COUNTRY

The Goulburn Broken CMA will appropriately acknowledge Traditional Owners using respective Traditional Owner welcome to country protocols at all events and in all relevant documentation.

## VISION AND GUIDING PRINCIPLES

- The Goulburn Broken CMA acknowledges that Indigenous Australians were the first people on this land.
- The Goulburn Broken CMA acknowledges and will strive to incorporate the aspirations of TCAC and YYNAC in caring for Country, as documented in their respective Country Plans.
- The Goulburn Broken CMA as committed to engaging with Traditional Owners during planning and project development, providing opportunity for Traditional Owners to be actively engaged in natural resource management decisions.
- The Goulburn Broken CMA are committed to working with Traditional Owners to build cultural awareness in the broader community, and will support the efforts of non-Indigenous Australians to understand Indigenous culture and values.
- The Goulburn Broken CMA will take a leadership role to facilitate positive change in services and programs in the general community that improve employment and engagement of Traditional Owners in natural resource management.
- The Goulburn Broken CMA will continue to demonstrate commitment to improvement in response to evaluations of programs and services.

## INDIGENOUS LAND MANAGEMENT ACROSS THE REGION

The *Aboriginal Heritage Act 2006* is primary legislation for Aboriginal land management in Victoria. The main purposes of this Act are:

1. To provide for the protection of Aboriginal cultural heritage and Aboriginal intangible heritage in Victoria;
2. To empower traditional owners as protectors of their cultural heritage on behalf of Aboriginal people and all other peoples;
3. To strengthen the ongoing right to maintain the distinctive spiritual, cultural, material and economic relationship of traditional owners with the land and waters and other resources with which they have a connection under traditional laws and customs; and
4. To promote respect for Aboriginal cultural heritage, contributing to its protection as part of the common heritage of all peoples and to the sustainable development and management of land and of the environment.

The *Aboriginal Heritage Act 2006* also provides a statutory role for Traditional Owners in Aboriginal cultural heritage management through the appointment of Registered Aboriginal Parties (RAPs). RAPs have legislative responsibility to manage development with potential to impact on Aboriginal cultural heritage through formal engagement in the development and approval of cultural heritage management plans. The RAPs also functions to safe guard Aboriginal cultural heritage on the land for which the party is registered. This includes being consulted during and/or party to Aboriginal Cultural Heritage Land Management Agreements, On-going Protection Declarations and Aboriginal Cultural Heritage Permits.

The YYNAC received RAP status in 2007, and TCAC in 2009.

YYNAC and TCAC are also actively engaged in land management. YYNAC has joint management agreements with the Victorian and NSW governments to jointly manage, with state NRM agencies, Crown land areas and newly established National Parks of the Murray and Goulburn rivers, their tributaries and other designated areas of the Yorta Yorta Nation country.

The Taungurung people are currently engaged in negotiations with the Victorian Government under the *Traditional Owner Settlement Act 2010* for formal recognition as the traditional owners of the land and for specific rights and benefits with respect to Crown Land on their traditional lands.

## KEY OBJECTIVES, OUTCOMES AND ACTIVITIES

- Support events delivered in partnership with YYNAC and TCAC.
- Advocate for, and support efforts which contribute towards the aims of the Australian Government's "Closing the Gap" initiative.
- YYNAC, TCAC and the Goulburn Broken CMA will advocate and support one another.
- YYNAC, TCAC and the Goulburn Broken CMA will discuss and establish partnerships and agreements, strategies, plans and policy that provide a shared mutual benefit through collaboration.
- YYNAC, TCAC and the Goulburn Broken CMA where appropriate will collaborate to maximise benefits from shared financial and human resources, such as the provision of training and mentoring.
- YYNAC, TCAC and the Goulburn Broken CMA commit to regular meetings with nominated YYNAC and TCAC representatives to plan, monitor and review progress of initiatives including:
  - the development of opportunities within the partnership;
  - report on progress on actions and initiatives;
  - an opportunity to resolve any problems/ issues in project/ program delivery;
  - Cultural Heritage protection in project/ program delivery;
  - documentation of Traditional Ecological Knowledge;
  - look for opportunities which will benefit the partnership; and
  - review partnership (outcomes and effectiveness) on an annual basis.

## IMPLEMENTATION OF THE PARTICIPATION PLAN

The Goulburn Broken CMA has participation structures in place for Indigenous engagement and participation. This includes a number of project steering groups and the Goulburn Broken Indigenous Consultation Group.

This latter group meets three to four times a year with representatives attending from YYNAC, TCAC the Goulburn Broken CMA and Catchment partner organisations as required. This forum is the main conduit for information flow and awareness sharing of opportunities and broader NRM activity across the catchment.

As part of this participation plan, Goulburn Broken CMA will engage, implement, and provide support and resources to implement:

### CULTURAL HERITAGE

- The Goulburn Broken CMA will work with YYNAC and TCAC to protect Aboriginal cultural heritage across the Catchment.
- During the planning of works the Goulburn Broken CMA will consider Cultural Heritage and consult with YYNAC and TCAC where necessary.
- Goulburn Broken CMA will explore opportunities for funding to support the implementation of Aboriginal Cultural Heritage Land Management Agreements (ACHLMAs) with our RAPs to formalise inclusion of Aboriginal cultural heritage management in works delivery.
- The Goulburn Broken CMA will commit to the Board and all employees undertaking cultural heritage training with YYNAC and TCAC.

### NATURAL RESOURCE MANAGEMENT

- The Goulburn Broken CMA will continue to strive to build the capacity of YYNAC and TCAC to manage and improve natural resources within the region.
- The Goulburn Broken CMA will establish partnerships to attain resources to protect the region's assets and build Catchment resilience.
- The Goulburn Broken CMA will build the capacity of YYNAC and TCAC as land managers through the development of skills and training opportunities in natural resource management, including combined training events where appropriate/practical, to share knowledge and experience of caring for country.
- The Goulburn Broken CMA will continue to build the Pilot Program - Wayne Tennant Cadetship to increase higher education outcomes for Traditional Owners in the Natural Resource Management sector, and will seek ongoing funding opportunities to support this initiative as a recurrent capacity building program for TCAC and YYNAC into the future.
- The Goulburn Broken CMA will assist YYNAC and TCAC to establish Traditional Owner ecological related enterprises and NRM teams through support in contract procurement, placement on preferred provider lists, and through other Federal and State funded projects.
- The Goulburn Broken CMA will contribute to implementing the State Government's Water for Victoria strategy. This will include working towards recognising and understanding Aboriginal values in water resource management in the Goulburn Broken Catchment, through participation and consultation of YYNAC and TCAC in planning and decision making processes.

### APPLICATION OF TRADITIONAL ECOLOGICAL KNOWLEDGE

- The Goulburn Broken CMA will support YYNAC and TCAC to collate, store and share Traditional Owner Ecological Knowledge to build capacity for their communities and to provide an education tool for other land managers in the catchment.
- The Goulburn Broken CMA will work with YYNAC and TCAC to incorporate Traditional Ecological Knowledge into the management of land and water within the catchment to ensure that our Traditional Owners intrinsic understanding of natural ecosystems is applied in the management of our fragile environment, supporting the sustainability of land and water resources into the future.
- The Goulburn Broken CMA will consult with YYNAC and TCAC, and where appropriate utilise Traditional Ecological Knowledge in publications to improve and increase the incorporation of Traditional Ecological Knowledge into environmental management with partner agencies and the broader community.

### MEASURES OF SUCCESS

The Goulburn Broken CMA sources a range of funding from the Australian and Victorian governments, and some corporate and philanthropic organisations. All funding received has reportable outputs and key deliverables.

For example, under the Australian Government's National Landcare Programme - Building Traditional Owner Capacity & Participation project, key targets include:

- numbers of Traditional Owners trained in certain disciplines;
- Traditional Owner involvement in NRM activities; and
- facilitate the development of Taungurung and Yorta Yorta Whole of Country Plans.

Measures of success could include:

- an increase in the number of YYNAC and TCAC placed in sustainable employment;
- the number of YYNAC and TCAC employees transitioned into traineeships to increase skills development;
- increased participation of YYNAC and TCAC people in NRM funded through Goulburn Broken CMA programs; and
- increased understanding, appreciation and use in projects of Traditional Ecological Knowledge by Goulburn Broken CMA staff, Board and the broader community.